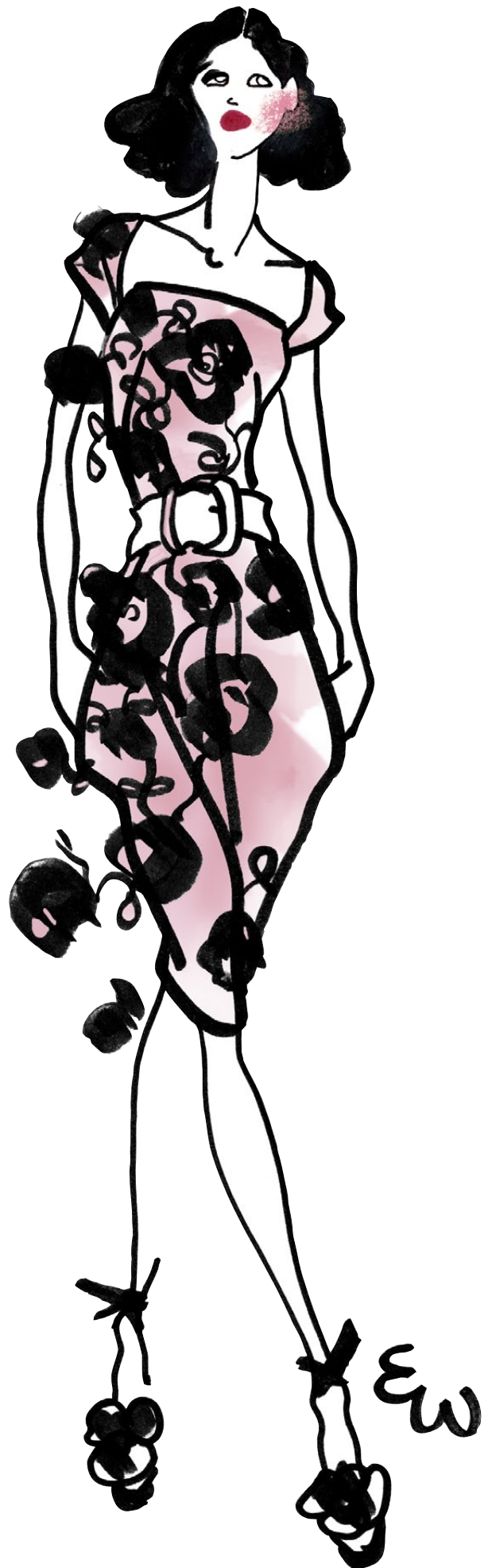


LAFAYETTE 148 NEW YORK
SPRING 2011

MODERN. **LADYLIKE**. CHIC.
LIGHT AND AIRY WITH FLIRTY
EMBELLISHMENTS AND TRIMS -
LINGERIE-INSPIRED, LACE, FEATHERS
AND FRINGE. PRETTY IN PINK.
UNEXPECTED **COLOR PAIRINGS**.
TONAL MIXES. STYLIZED BLOSSOMS
AND **FLORAL** BLOOMS.

bienvenue printemps!

DESIGNED BY EDWARD WILKERSON



LAFAYETTE 148 NEW YORK
SPRING 2011

trends

FEMME FATALE DETAILS

FLIRT WITH LACE, BOWS, RUFFLES

ROMANCING THE DRESS

LADYLIKE, PURELY-PRETTY, DEMURELY SEXY

BEAUCOUP DE FLEURS

STYLIZED BLOSSOMS AND FLORAL BLOOMS

WIDE-LEG WINNERS

ELEGANT DRAPE WITH SWEEPING STYLE

EDITORIAL MIXING

DON'T PLAY BY THE RULES

BACK TO BLACK

CLASSICALLY ANCHORED, MODERN, MINIMALIST

NEW NEUTRALS

UNEXPECTED, COOL KHAKI RIVALRS WHITE

NOVEL IDEA

LOVELY IN LEATHER - LASER-CUT,
RUFFLED, EMBOSSED

*...everything a woman wants -
la belle vie!*



LAFAYETTE 148 NEW
YORK
SPRING 2011

fabric highlights

"A" delivery



POTPOURRI JACQUARD

This one-of-a-kind jacquard perfectly encapsulates the mood of our first Spring delivery – fresh, ladylike sophistication. Fine yarns are woven together creating a jacquard pattern, which is then printed in a bouquet of stylized florals. This fabric offers a subtle touch of sheen on gorgeous iced pastels – it's truly season appropriate.



TRIFLE WEAVE

Light and airy, this boucle is the perfect ensemble for any Spring occasion. Finely spun yarns are combined with fanciful, irregular novelty yarns creating dimension and texture.



HONEYCOMB CLOTH

A perfect blend of wool and silk lends this novelty base cloth superb drape – ideal for any silhouette. Fine yarns are woven to create a delicate honeycomb pattern, adding subtle tactile surface interest to this everyday fabric.

LAFAYETTE 148 NEW
YORK
SPRING 2011

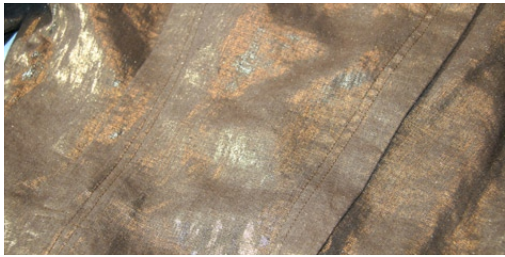
fabric highlights

"B" delivery



MARREKECH CLOTH

New, modern and chic best describe this impeccable fabric. Smooth, fine rayon yarns are woven with hints of silk producing an understated sheen with a semi-crisp hand. Light as a feather yet substantial in styling, this cloth is sure to make Spring the coolest season ever.



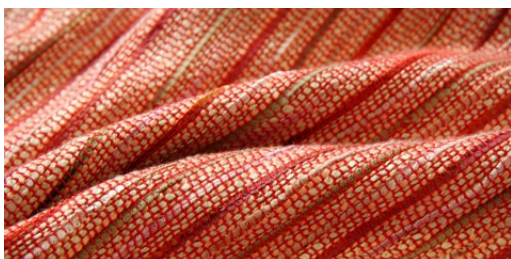
MEDICI LINEN

We've taken linen to new heights. Smooth and light to the touch, this rich Coconut colored cloth is adorned with a thin coating of metallic glitter, creating a sophisticated jewel-like masterpiece. It's the ideal, ultra-light comfort fabric - easy and free flowing. Welcome to designer linen.



HAMADA LINEN

Considered the Donegal of Spring, this rich yarn-dyed linen speaks volumes when worn on its own or suited. The slight irregularity of the linen yarns help create a rustic yet supple hand. Light in weight, it is the perfect warm-weather fabric for semi-structured jackets and bottoms.



CAYMAN WEAVE

Fresh and clean best describe this novelty fabric. Infused with shots of rich, deep color set against a clean white backdrop. A flawless 'Ladies who Lunch' suiting - this fabric is undoubtedly top of the list.

LAFAYETTE 148 NEW
YORK
SPRING 2011

fabric highlights “C” delivery



PETITE PIQUE

This new cotton stretch base cloth is the foundation of this next delivery. Light yet durable, classic yet fun. The finest Italian yarns are used to help create a delicate pique pattern. With the addition of stretch, effortless comfort is achieved. Vibrant saturated colors. Electric Blue and Sprout [along with classic Black and White] make this a stand-out fabric.



MONTEGO PRINT

Beautifully printed large animated florals help bring a 'tropical flavor' to the group. These alive, magnificent colors are printed on a superfine, featherweight blend of silk and cotton. Breezy and ethereal, these tunics are then adorned with hand-beaded necklines - sure to catch everyone's attention.

LAFAYETTE 148 NEW
YORK
SPRING 2011

fabric highlights

“X” delivery



DISTINCT DOUBLE FACE

Rich and lofty, our fine Italian double face is a must-have fabric. The finest Italian wool yarns are used to produce this sophisticated base cloth. With just a hint of stretch, this fabric is ideal for ‘designer-like’ structured pieces yet subtle enough for ladylike dresses and sleek pants.



OPTIC HERRINGBONE

The crepe-like hand and slightly exaggerated optical pattern make each silhouette news worthy. Finely twisted wool yarns, with a touch of stretch, add comfort and create the perfect drape.



CAROUSEL CLOTH

This inviting, highly textured boucle novelty cloth sits center stage. Thick and thin meshed with more classic staple yarns, generate an almost 3 dimensional appearance. This fabric truly stands on its own with surface interest and hand-feel. Feminine yet whimsical, this fabric is sure to peak everyone’s interest.